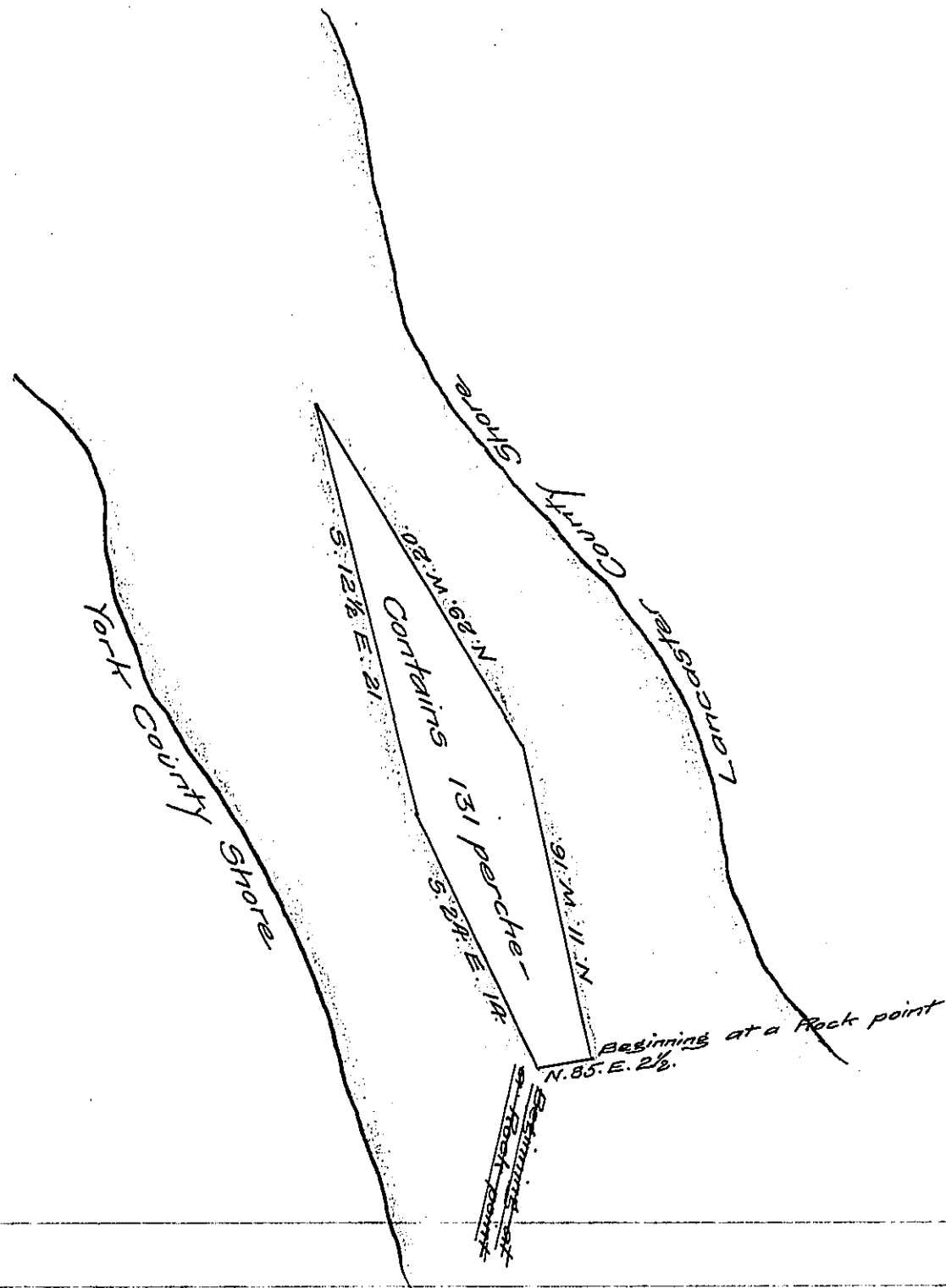


FORM No. 1.



The above is a Draught of Edward Hess's Big fox
 Isap- Island Situated in the River Susquehanna River, in Conos-
 toga township Lancaster County, and about a fourth of a mile
 below the mouth of Conostoga Creek, Surveyed in pursuance of
 his Warrant dated February 13th 1841 & contains 131^{ac}

By James Calwell D.S.

To Jacob Sallade Esq^r Surveyor }
 General of Pennsylvania }

IN TESTIMONY that the above is a copy of the original remaining on file in
 the Department of Internal Affairs of Pennsylvania, made
 conformably to an Act of Assembly approved the 16th day of
 February 1833, I have hereunto set my hand and caused
 the Seal of said Department to be affixed at Harrisburg,
 this thirteenth day of January 1908.

Henry Howell

Secretary of Internal Affairs.